

# CERTIFICATE OF LOCATION OF GOVERNMENT CORNER

South 1/4 Corner of Section 2, Township 108, Range 42, 5th P.M.

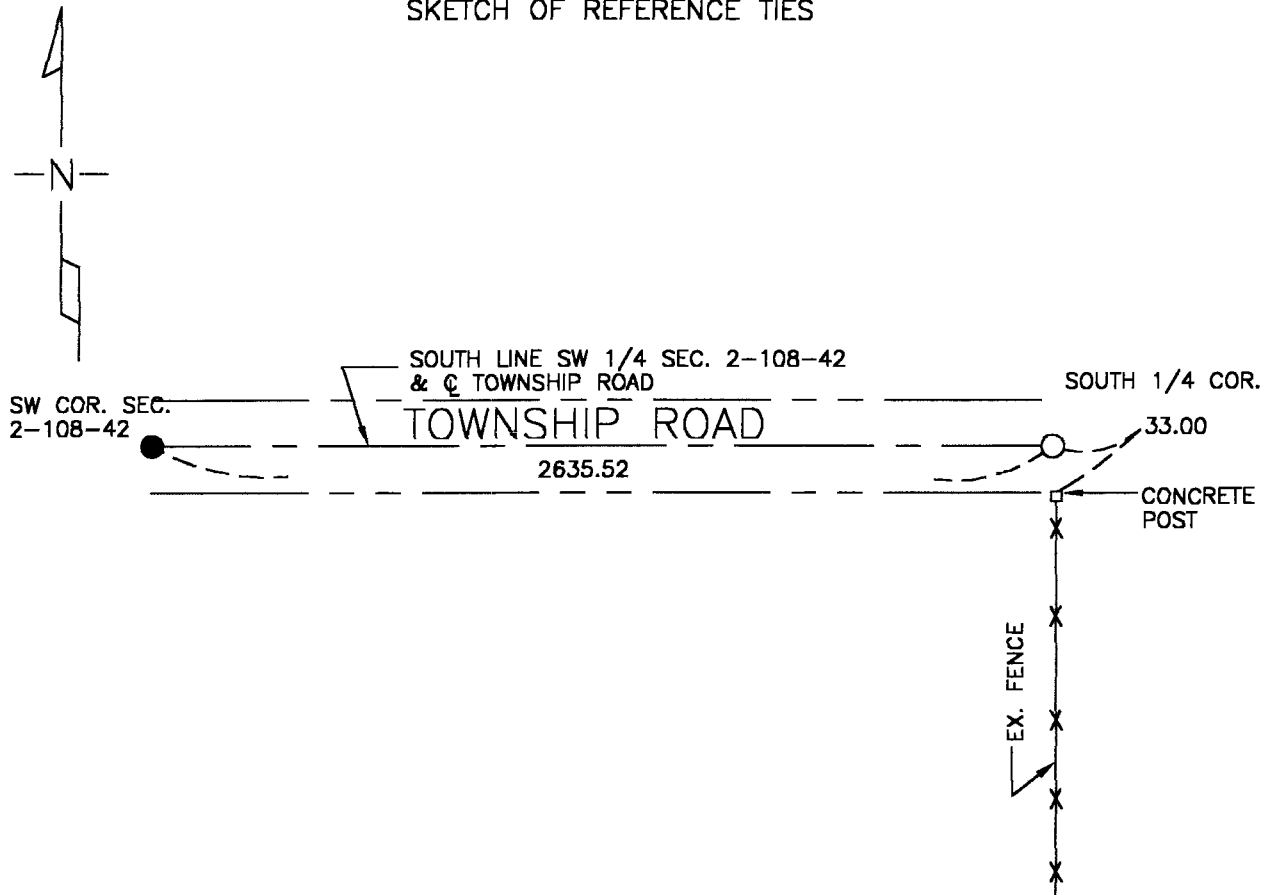
STATE OF MINNESOTA, County of Murray

At the corner location shown on the sketch

- On 7/26/98 found a Nothing
- left monument as found    
  lowered monument,    
  removed monument (explain)

- On 7/26/98 placed a 1" pipe w\cap no. 23008 in line with fence south and 33' south of 3" iron corner post in 3' X 3' concrete base.(practical location)

## SKETCH OF REFERENCE TIES



Statement of evidence relative to this corner location is on back of page.

I hereby certify that this document and the data contained herein was prepared by me or under my direct supervision.

Perry L. Zieske     9-20-00  
SIGNATURE     DATE

MN. REGISTRATION NO. 23008

- Land Surveyor,      Professional Engineer
- County Surveyor,      County Engineer

OFFICE OF THE COUNTY RECORDER

I hereby certify that this document was filed in the Co. Recorder's Office at \_\_\_\_\_ on the

\_\_\_\_\_ day of SEP 22 2000

County Recorder Jan V. Johnson  
By \_\_\_\_\_, Deputy

DOCUMENT NO. \_\_\_\_\_